

Universal StudyBed Assembly Instructions

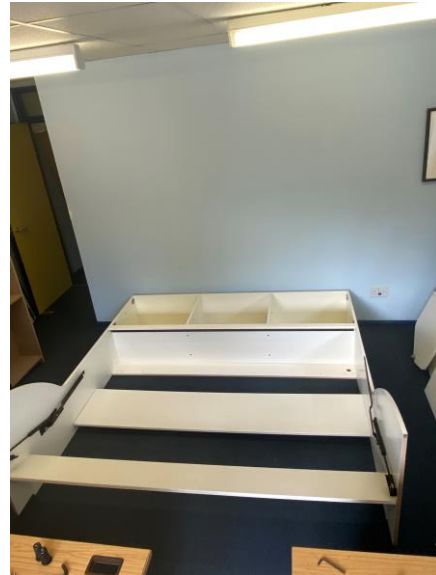
Main Unit

2 people required

Best assembled on its back if space permits, but can also be assembled upright

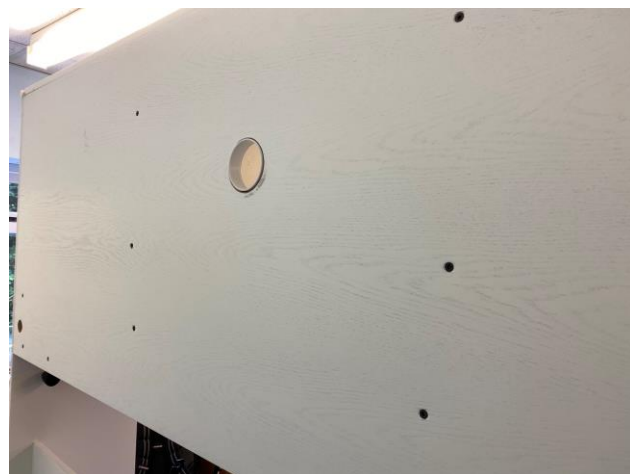
1. Insert dowels in both body sides (8mm x 30mm).
2. Locate into one bodyside - The backboard, bottom stretcher, top shelf, bottom shelf, top box rear panel. Fully tighten using 70mm confirmat screws.
Locate other bodyside onto the rails and tighten all screws.
Stand frame upright.

If assembling in an upright position, start by loosely attaching the backboard, add the other horizontal panels and then fully tighten.



3. Locate top box uprights and screw into place using 70mm confirmats.

First check they line up, as they only fit one way.



4. Fit corner shelves with lock rebate facing the floor and at the front.
5. Fit rear support tube behind the back panel using M8 bolts through bodysides into end of tube.
6. Bolt on the hard rubber stops using 2 x M10 bolts.
7. Fit top box shelves onto shelf pins in the desired location.
8. Screw clip-on hinges to the doors using 3.5mm x 20mm screws. Screw on hinge plates to the bodysides and fit doors. (may already be done)



Bed Frame

9. Insert dowels into bed sides and attach the front and back bed rails using 70mm confirmats.
10. Fit lock plates using 20mm x 3.5mm screws. Assemble lock barrel to lock plate through bed side.
(May already be done)
11. Tap in plastic shim and trunnion bush from inside the frame. Support and attach the bed frame to the bodysides by using the M12 x 55 bolt through the trunnion and screwed into the thread of the mechanism plate.

Be very careful to locate properly and not to cross thread.

Fully tighten using a 10mm allen key.

12. Lay bed cover into frame resting on the bed rail cleats.

Lay slats on the bed cover.



Screw down slats using the 4x50mm wood screws.



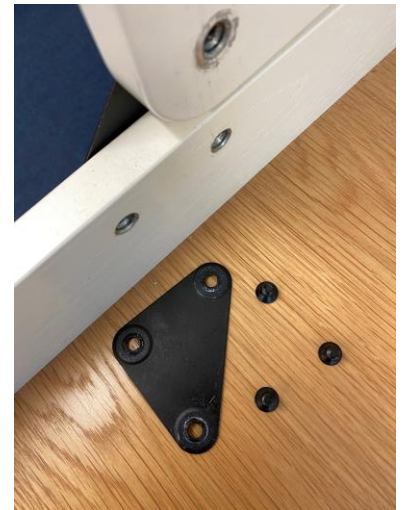
Swivel/lift bed frame up until bed cover is facing you and lock into position by turning the lock barrels.



Desk Fitting

13. Lay desk flat in front of the bed frame. Assemble tri plates/tri plate silver bushes using the M6 grub screws.

Fit one on the outside of the desk side and the other on the inside.



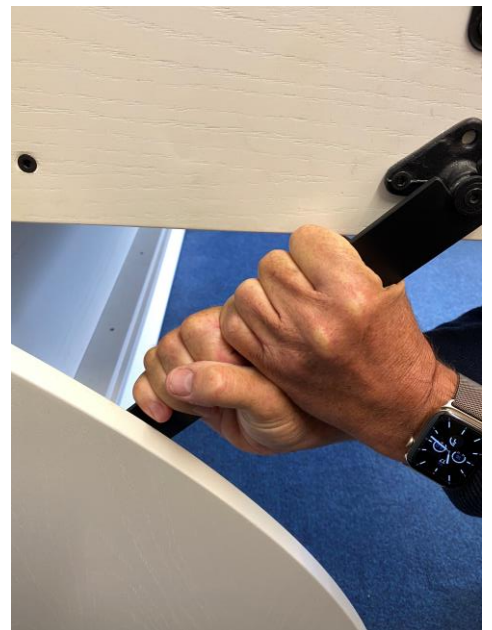
Using two people, locate the tri plate bushes into the holes on the bedsides and allow desk to swing down flat.



Secure the other tri plates onto the bushes using the remaining M6 grub screws.



14. Pull down the mech arms until they hook under the desk side tribearer.



If you have any queries during the process, please do not hesitate to give us a call on 01844 214484



Universal StudyBed Dismantling Instructions

This is a 2 person job

1. Ensure desk locks are engaged.

Detach mech arms from desk sides by pulling arm downwards to unhook.



N.B. They are held in position by the tension in the gas struts however they will move with firm handling and you may find it easier if you sit on the floor in front of the arm and pull it firmly down. In addition, you could brace a foot against the outer frame for extra purchase.

2. **Remove Desk**

Detach triangular plate from bed sides/desk sides by removing the three bolts using 4mm hex bit.

Remove one triangular plate from each side (one from the outside and one from the inside), swing the desk through 90 degrees and remove it.

3. **Remove Bed Frame**

Disengage locks and pull bed slowly down until it touches the floor at the front.

Take off mattress.

Remove 50mm woodscrews from slats (PZ2 bit).

Remove slats.

Remove bed cover, ie. Lift upwards and out.

Unbolt main pivot bolts from inside the bed frame using a 10mm Allen key.

4. Slide bed frame forwards and remove the 70mm confirmats from both front and rear bed rails.
5. Unclip top box doors and remove (clip is at the rear of the hinge)
6. Remove the three loose shelves from the top box
7. Move main frame forward to access rear and remove 70mm confirmat screws from the two centre uprights – two top, two back and two underneath.
Remove centre uprights (4mm hex bit required).
Remove corner shelves.
Unbolt the metal tube that is behind the back board and remove (5mm hex bit).

8. **Dismantle Main Frame**

If space allows, lay frame on its back (two person job) then remove all 70mm confirmats from one side and detach the body side.

Repeat for opposite side.

If space won't allow this, remove confirmats from the top panel, plus two wood screws. **Loosen** the confirmats on both sides of the top box rear panel, about halfway out.

Carefully prise the body sides apart to allow removal of the top panel.

Repeat this process from top to bottom, with the exception of the back board, removing one rail at a time – finishing up with the bottom rail.

Finally detach the body sides from the back board.